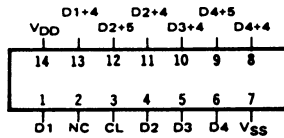


SCL4006B

EGHTEEN STAGE SHIFT REGISTER



STATIC CHARACTERISTICS: (V_{SS} = 0 V)

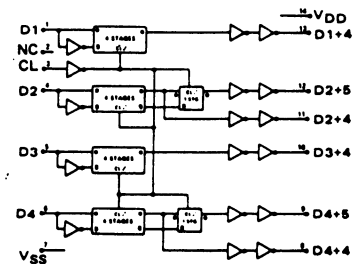
PARAMETER	CONDITIONS	V _{DD} (Vdc)	T _{LOW} *		+ 25°C			T _{HIGH} **		UNIT
			MIN	MAX	MIN	TYP	MAX	MIN	MAX	
QUIESCENT DEVICE CURRENT I _{DD}	V _{IN} = V _{SS} OR V _{DD}	5		5		0.05	5		150	μA _{dc}
		10		10		0.1	10		300	
		15		20		0.2	20		600	

Note: *T_{LOW} = -55°C for C / H devices, -40°C for E / S devices, **T_{HIGH} = +125°C for C and H devices, +85°C for E / S devices.

DYNAMIC CHARACTERISTICS: (CL = 50pF, TA = 25°C)

PARAMETER	V _{DD} Vdc	MINIMUM	TYPICAL	MAXIMUM	UNIT
PROPAGATION DELAY TIME t _{PLH} , t _{PHL}	5		250	500	ns
	10		125	250	
	15		100	200	
OUTPUT TRANSITION TIME t _{TLH} , t _{THL}	5		100	200	ns
	10		50	100	
	15		40	80	
CLOCK PULSE WIDTH MINIMUM PW _{CL}	5		200	400	ns
	10		100	200	
	15		80	160	
MAXIMUM CLOCK FREQUENCY f _{CL}	5	1.25	2.5		MHz
	10	2.5	5.0		
	15	3.0	6.0		
CLOCK RISE & FALL TIME MAXIMUM t _{rCL} , t _{fCL}	5	15			μs
	10	5			
	15	3			
MINIMUM SETUP TIME t _{set}	5		40	80	ns
	10		25	50	
	15		20	40	
MINIMUM HOLD TIME t _{hold}	5		40	80	ns
	10		25	50	
	15		20	40	

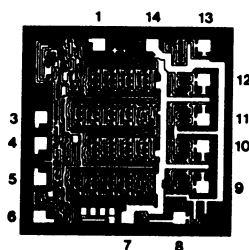
LOGIC DIAGRAM



DIE DRAWING

SCL4006B

65 x 65 mils



Note: Refer to "SCL4000B SERIES FAMILY SPECIFICATIONS" for remaining Dynamic & Static Characteristics, and, for recommended and maximum operating conditions.